



Accredited for compliance with ISO/IEC 17025 – Testing
NATA is a signatory to the ILAC Mutual Recognition Arrangement for the mutual recognition of the equivalence of testing, medical testing, calibration and inspection reports
Accreditation No. 2735

OIL-WET INCLINING PLATFORM SLIP RESISTANCE TEST Kenbrock Cushionwood XL

Prepared for: Kenbrock Pty Ltd
Steven Gradecak
17 Cato Street
HAWTHORN EAST VIC 3123

Sample Description: Kenbrock Cushionwood XL

No. of Specimens & Size Supplied: 2 off, 228x1525 mm, (Sampling Conducted by Client)

Surface Structure: Smooth

Specimen Preparation: Washed with water and pH neutral detergent, rinsed then dried.

Specimen Configuration: Fixed

Test Direction: Test conducted parallel with embossed finish.

Joint Type & Width: N/A

Air Temperature: 22°C

Test Standard: AS 4586:2013 Slip resistance classification of new pedestrian surface materials, Appendix D - Oil Wet Inclining Platform Test

Test Shoe: Leipzig V73-SP

Test Location: ATTAR 44-48 Rocco Drive, Scoresby, VIC, 3179

Test Date: 15 February 2024

Test Personnel: Marcus Braché and Louie Karkatzoulis

Displacement Space (rounded to the nearest 0.5cm ³ /dm ²):	Not tested
Displacement Space Assessment Group (Appendix E, AS 4586 - 2013):	Not tested
Corrected mean overall acceptance angle (α_{ave}) (rounded down to the nearest degree):	18°
Classification:	R10

These results apply only to the specimens tested and it is recommended that before selection of flooring or paving materials the effect of service conditions, including maintenance procedures and wear on their slip resistance be checked.

Prepared By:



Marcus Bosworth
Compliance and Testing Technician

Reviewed By:



Marcus Braché
Senior Engineering Technician
Approved Signatory

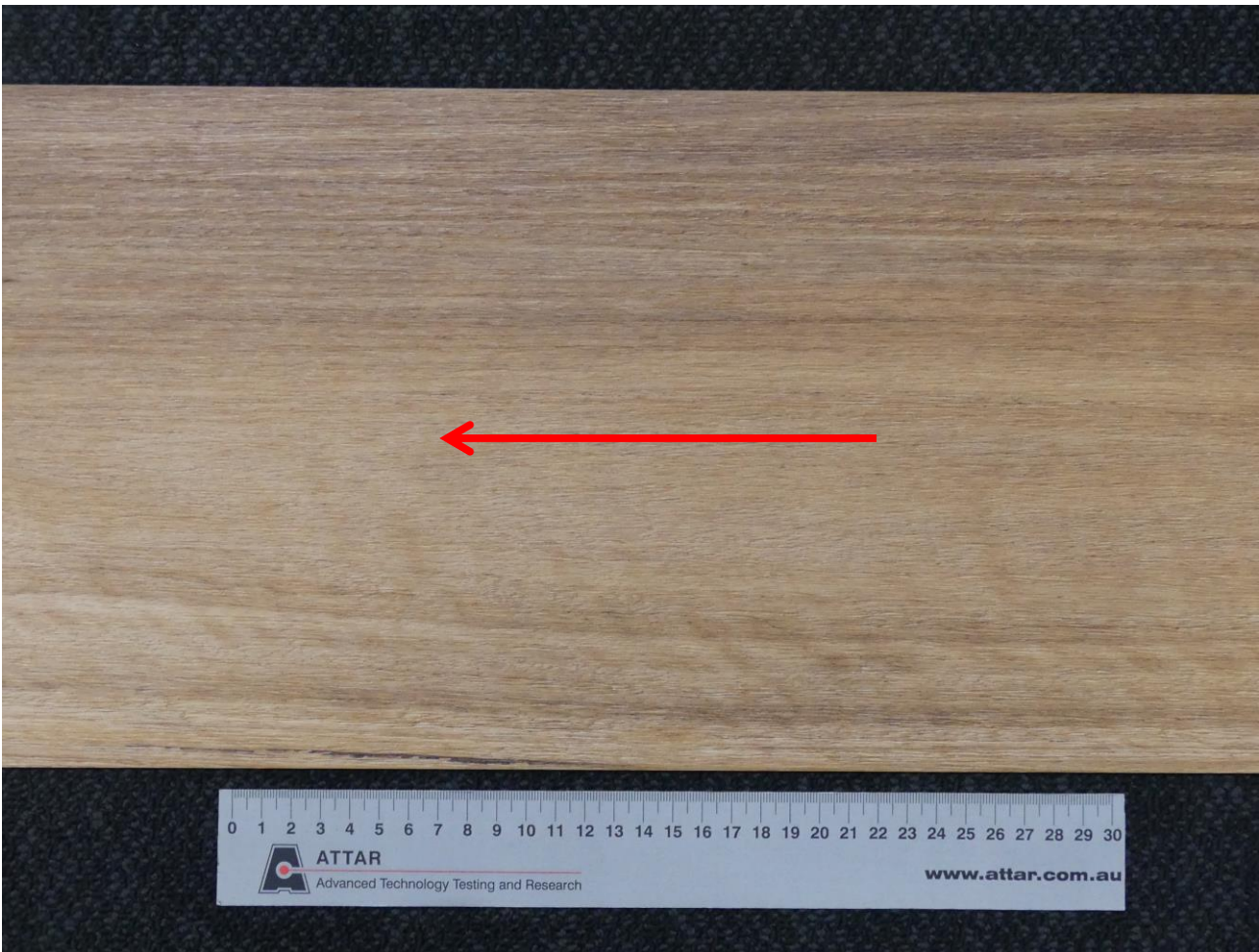


Figure 1: Kenbrock Cushionwood XL
Arrow indicates direction of testing



CLASSIFICATION CRITERIA – AS 4586 - 2013
Oil Wet Inclining Platform Test – Appendix D

Compliance

TABLE 5: CLASSIFICATION OF PEDESTRIAN SURFACE MATERIALS ACCORDING TO THE OIL-WET INCLINING PLATFORM TEST

Classification	Angle, degrees
No Classification	<6
R9	≥6 <10
R10	≥10 <19
R11	≥19 <27
R12	≥27 <35
R13	≥35